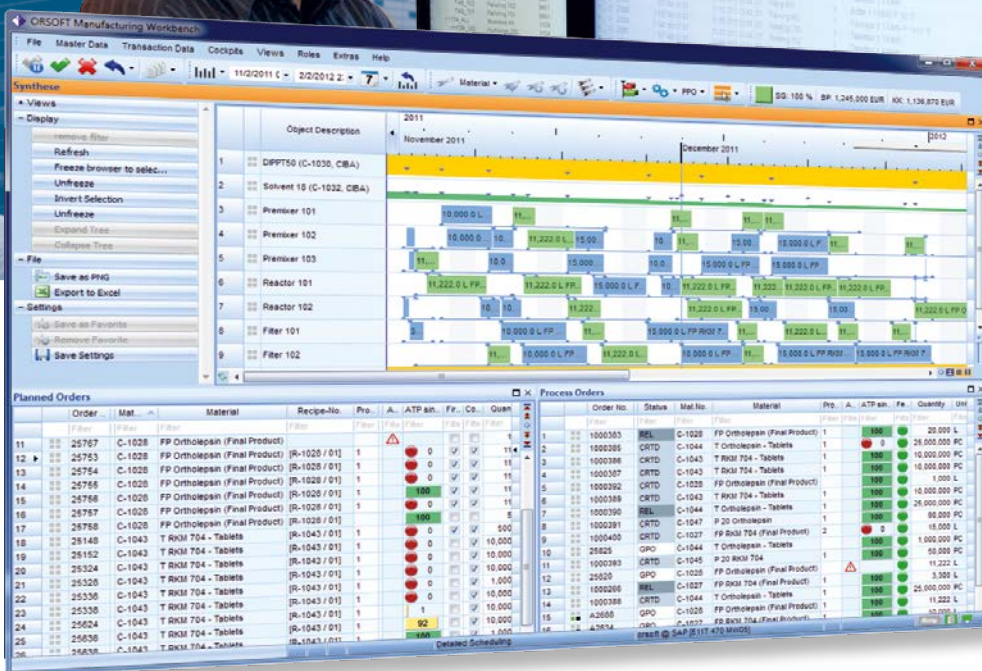
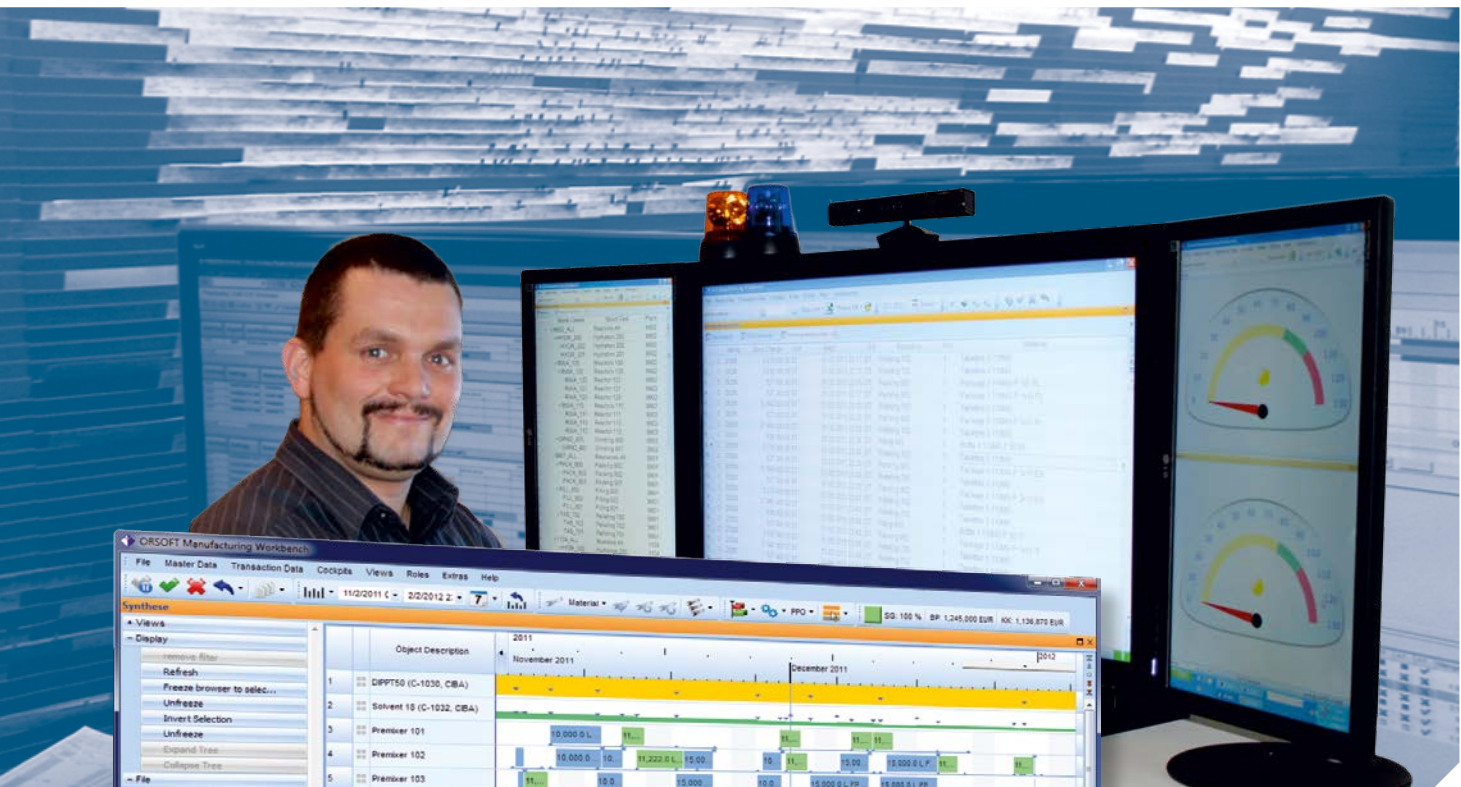


Advanced Planning and Scheduling for SAP® ERP and SAP® S/4HANA

Simultaneous material and multi-resources planning



Advanced Planning and Scheduling

ORSOFT Manufacturing Workbench is an advanced planning and scheduling (APS) software which can be used as an add-on to SAP® ERP and SAP® S/4HANA. SAP ERP or SAP S/4HANA is enhanced by ORSOFT Manufacturing Workbench with components such as an interactive planning board and planning functions and functions for SCM business processes. This comes without the introduction of complex additional IT infrastructure or a separate parallel SCM system.

PLAN BETTER IN SAP ERP

The production and logistics planning in ERP systems, such as SAP ERP PP, uses the MRP-II method and requires material demands and capacity planning to be separated. ERP systems are transaction-orientated.

ORSOFT Manufacturing Workbench follows the principles of advanced planning and scheduling and offers interactive, simultaneous multi-resource planning, allowing the planning scenarios to be simulated and optimised.

Both dialogue-orientated, gradual improvements of plans using heuristics and algorithms and mathematical solver-based optimisation processes are used.

ORSOFT's APS software solutions are based on a standard system with a user-specific shell that is the basis for tailored, individual planning solutions. These individual solutions will be fully maintained within the user shell.

MORE THAN CLASSICAL SCHEDULING

Solutions based on ORSOFT Manufacturing Workbench are not only used as an APS system or control stations. Existing SAP processes are replaced by online ATP and CTP tests – based on key performance indicators – at the click of a button directly from SAP transactions. In this way users immediately receive current and reliable statements concerning delivery dates and prices directly during the sales process without having to know or operate the software.

Additional solutions are e.g. the blend optimisation in foundries or the levelling and smoothing in series production. Common to all solutions is the improvement of specific processes and fulfilment of company objectives within the production planning process based on an established functional range.

Today, the system is used in nearly all industries – be it the processing or manufacturing industry.

Industry competence based on a strong standard since 1990

Chemicals

Multi-product campaigns, batch and semi-continuous production and variable outputs, energy requirements, fire load, constraints



Food & Beverage

Tank and silo planning, filling, parameter-based planning and packaging, blending calculation, shelf-life, CIP



Mill-Products

Vendor managed inventory for packaging manufacturers, blending optimisation, box planning in foundries



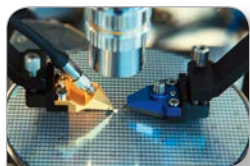
Pharmacy

Packaging planning, active agent content, prescription validity, customer retention, documentation, non-free packing, laboratory planning



Make-to-order Production

Installation processes, mixed static and dynamic pegging, capacity check at basic dates, workflows



High-technology/ Solar/ Defence

Dome production, folding tables, project system planning by linking SAP PS and SAP PP



Textile

APS for SAP ERP with Industry Solution AFS, learning curves and capacity maintenance concerning work familiarisation periods, product mix



Oil and Petrochemicals

Semi-continual production; blending and filling plan, loading plan, tank storage and pipeline planning, hydrocarbon product management



Healthcare

Bed allocation, appointment disposition for ambulances and service facilities, admission coordination by clinical patterns, surgery allocation



Series Production, Automotive

Subcontracting, planning against delivery plans, demand balancing, production balancing and levelling, KANBAN principles, order networks, resource networks

Transparency and optimal decisions in supply chain management and production planning

The screenshot displays the ORSOFT Manufacturing Workbench interface. At the top, there's a menu bar with options like 'Date', ' Stammdaten', 'Bewegungsdaten', ' Cockpits', 'Sichten', 'Rollen', 'Extras', 'Hilfe', 'Development', and 'Menu Configuration'. Below the menu, there's a toolbar with various icons. The main area shows a Gantt chart for the year 2012, with a detailed view for April 2012. The chart shows resource usage for 'Verpackungslinie 2', 'Werker', 'Reaktor 101', 'Filter 101', and 'Vorlage 102'. Below the chart is a table of 'Planned Orders' with columns for Order, Material, Fe., A., ATP ei., F., U., Quant., Remain., Basic Start, and Basic End.

Order	Mat...	Material	Fe.	A.	ATP ei.	F.	U.	Quant.	Remain.	Basic Start	Basic End
1	25922	C-10... FP RKM 704	1	100				10.000	13.000	0 L	16.01.2012 20.01.2012
2	25923	C-10... FP Ortholepsin (Finalpro...	1	0				20.000	0	20.000 L	16.01.2012 20.01.2012
3	25927	C-10... T Ortholepsin - Tabletten	1	0				20.000.000	0	20.000.000 ST	23.01.2012 27.01.2012
4	25928	C-10... FP RKM 704	1	100				12.010	12.010	0 L	30.01.2012 03.02.2012
5	25937	C-10... FP Ortholepsin (Finalpro...	1	100				15.000	15.000	0 L	06.02.2012 10.02.2012
6	25939	C-10... T Ortholepsin - Tabletten	1	90				20.000.000	0	20.000.000 ST	06.02.2012 10.02.2012
7	25938	C-10... T RKM 704 - Tabletten	1	0				10.000.000	0	10.000.000 ST	06.02.2012 10.02.2012
8	25945	C-10... P 50 Ortholepsin	1	79				500.000	0	500.000 ST	13.02.2012 17.02.2012
9	25943	C-10... P 50 RKM 704	1	100				200.000	0	200.000 ST	13.02.2012 17.02.2012
10	25942	C-10... P 20 RKM 704	1	100				500.000	0	500.000 ST	13.02.2012 17.02.2012
11	25944	C-10... P 20 Ortholepsin	1	100				500.000	500.000	0 ST	13.02.2012 17.02.2012
12	2594	C-10... T RKM 704 - Tabletten	1	100				10.000.000	0	10.000.000 ST	13.02.2012 17.02.2012
13	25941	C-10... T Ortholepsin - Tabletten	1	90				20.000.000	0	20.000.000 ST	13.02.2012 17.02.2012

Identification of the best (most profitable) planning through quick simulations in temporary local RAM databases

Decision support through automatic planning algorithms and optimisation procedures

Improvement of the planning accuracy by using the detailed planning model for all planning levels

Simultaneous planning of materials and capacities

Better overview and transparency, also across departments, plants and companies

SAFETY THROUGH CERTIFIED INTEGRATION INTO SAP ERP

ORSOFT Manufacturing Workbench is an add-on for SAP ERP and SAP S/4HANA. Only data structures and nomenclature of the superior SAP system are used. There are no parallel data worlds. Usage and administration is much easier and simpler than separate, parallel systems.

The product uses a certified interface to the SAP system and can be implemented and used productively within just a few weeks. ORSOFT has been a close partner of SAP SE since 1997 and a Microsoft ISV Gold Partner since 2011.

Since 2007 ORSOFT Manufacturing Workbench has been recommended by SAP worldwide as SAP-endorsed business solution if, in terms of production planning, SAP ERP has to be enhanced with functional or model-specific additions and be fully maintained, if APS functionalities for SAP Industry Solutions are desired.

You can also find certified ORSOFT solutions powered by SAP NetWeaver in the SAP Store under www.sap.com.

INTEGRATION

Certified add-on to SAP ERP

- ◆ SAP-endorsed business solution, 100% integrated into SAP ERP
- ◆ Use of existing SAP ERP data, the SAP authorisation concept and the same nomenclature
- ◆ No additional infrastructure or modifications in SAP ERP
- ◆ Easy to administer software and interface
- ◆ Fully maintained extension to SAP ERP (no individual programming)

IMPLEMENTATION

Fast piloting of customer data

- ◆ Minimisation of project risk from piloting based on customer data
- ◆ Fast and gradual introduction without big bang with high ROI from the beginning
- ◆ Short project terms
- ◆ Standardised project implementation
- ◆ If implemented as rich clients, then no additional hardware is required
- ◆ Strong solidarity of the later user due to high user friendliness and use from the start

ARCHITECTURE

Standard and individualisation

- ◆ Affordable due to powerful standard functionality
- ◆ High-performance response behaviour due to local RAM database
- ◆ Continual planning without system ends due to uniform detailed planning model for all planning levels
- ◆ Simple adjustment to user requirements through configuration
- ◆ Planning in accordance with strategic goals through powerful algorithms
- ◆ Optimal decisions thanks to ability to simulate
- ◆ Choose interactive or short planning runs



SAP® Certified
Integration with SAP S/4HANA

SAP® Certified
Powered by SAP NetWeaver®

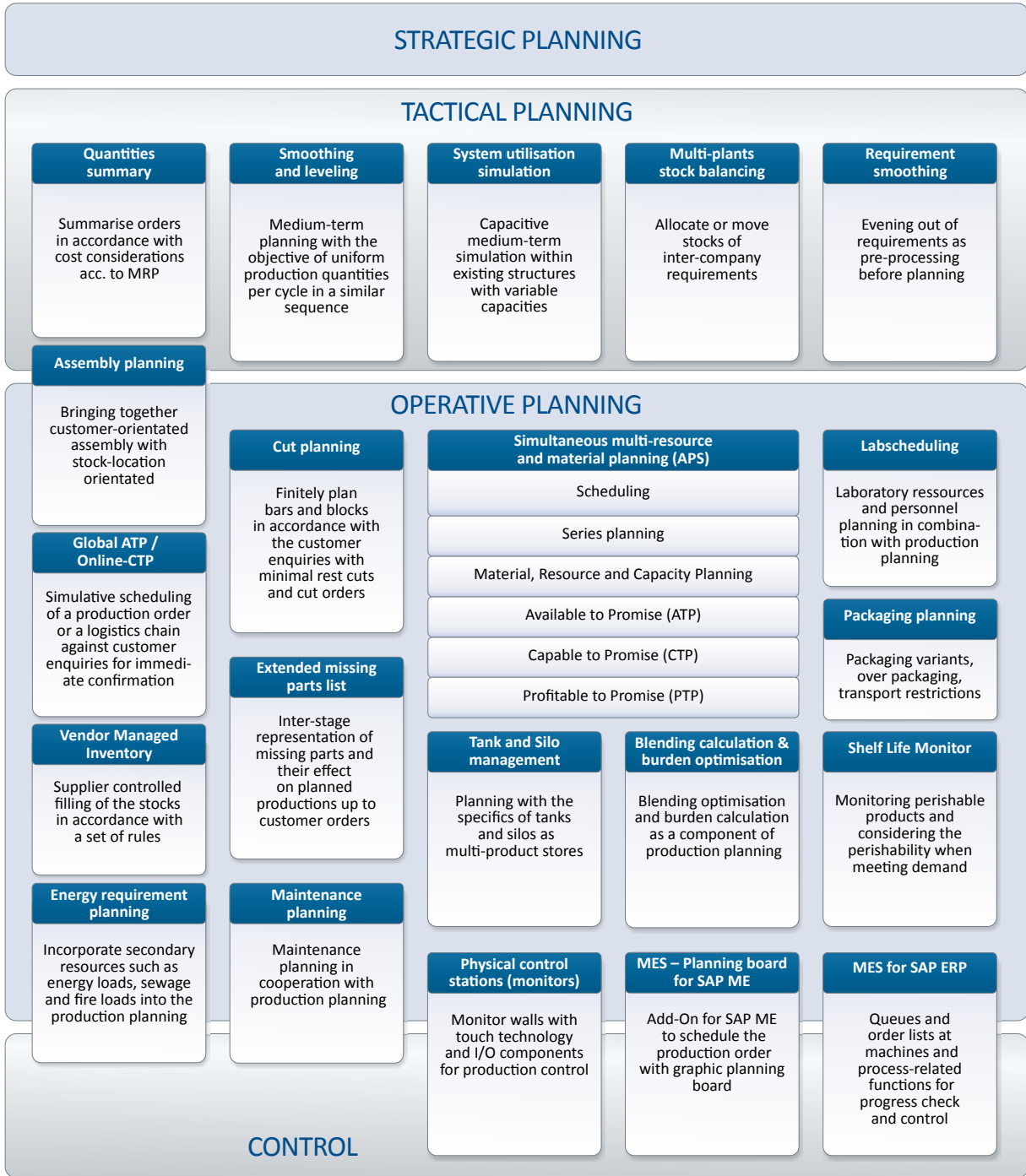
SAP® Certified
Integration with Applications on SAP HANA®

Microsoft
CERTIFIED
Partner

Microsoft Partner

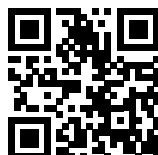
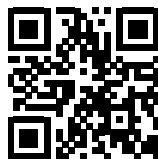
Gold Independent Software Vendor (ISV)





ORSOFT GmbH
 Martin-Luther-Ring 13
 D-04109 Leipzig, Germany
 Tel.: +49 (0)341/ 230 89-00
 Fax: +49 (0)341/ 230 89-01
 E-Mail: marketing@orsoft.de

HRB 28318, County Court Leipzig



For further information please visit our website at:

www.orsoft.net/en
www.orsoft.net/en/mwb

Trademarks or product names mentioned in this newsletter are the property of the respective holders. The rights of the images belong to the respective companies.